

## Half Notes and Whole Notes

These are **half notes**. A half note last for 2 beats, or *half* a measure.



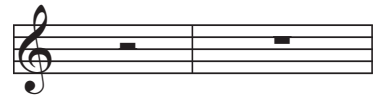
Beats: X      X      X      X

This is **whole note**. A whole note last for 4 beats, or a *whole* measure.



Beats: X      X      X      X

These are the corresponding **rests**. It's easy to confuse the two at first.



Half Rest      Whole Rest

## Guitar Duets

The student plays the top staff and the teacher plays the bottom. (Recordings available in the eBook at LouWarde.com)

1

Student *i m i m i*

2

Student *0 1 3*

Teacher *m i m i a i*

## Note Review

A. Write the letter name of the note below the staff.

B. Draw the note indicated below the staff.

example E      —      —      —      ex. F      G      E      F

3

Student

Teacher

mi

CI

CI

4

Student

Teacher

ami

*rit.* (slow down gradually)

*rit.*

5

Student

Teacher