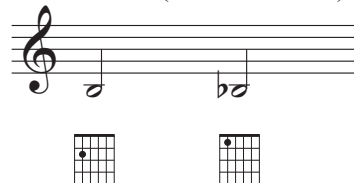
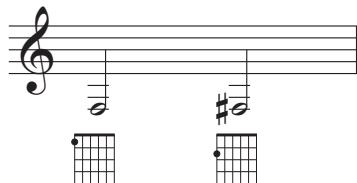


Accidentals

(A term from early 15th century, taken from the Latin word, *accidentem*, meaning "outside the normal course of nature.")

The **sharp** sign (#) raises a note by one fret.
For example, F is on the 6th string, 1st fret.
F# is on the 2nd fret. (See measure 11.)

The **flat** sign (b) lowers a note by one fret.
For example, B is on the 5th string, 2nd fret.
Bb is on the 1st fret. (See measure 9.)



Maestoso

Mauro Giuliani
arr. L. Warde

Student

5

10

15

20